

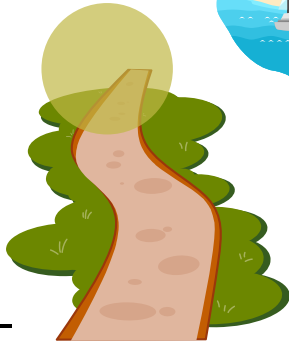
# LANDSCAPE: *nature*



1. B \_ A \_ \_



2. C \_ \_ E



3. H \_ L \_



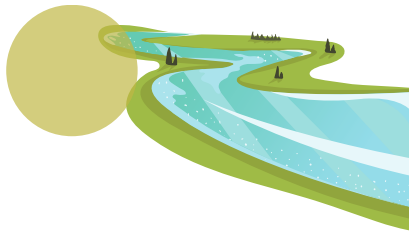
4. I \_ L \_ N \_

5. L \_ \_ E

6. M \_ \_ N \_ \_ I \_

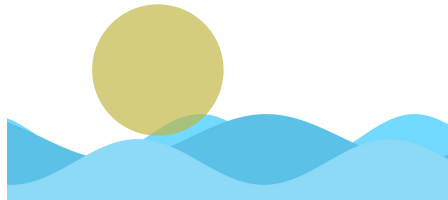


7. P \_ \_ H



8. \_ I V \_ \_

9. R \_ A \_



10. S \_ \_

11. V \_ \_ L A \_ \_

12. \_ \_ T \_



13. W \_ \_ D



14. \_ \_ T E \_ \_ A \_ L



# LANDSCAPE: nature

DO THE CROSSWORD PUZZLE!

The crossword puzzle grid consists of the following squares:

- 1: 2 squares (vertical)
- 2: 2 squares (vertical)
- 3: 6 squares (horizontal)
- 4: 2 squares (vertical)
- 5: 4 squares (horizontal)
- 6: 2 squares (vertical)
- 7: 1 square (vertical)
- 8: 4 squares (horizontal)
- 9: 4 squares (horizontal)

The icons are:

- 1: A forest of green trees.
- 2: A winding road.
- 3: A mountain range with a sun.
- 4: A tropical island with palm trees and a sailboat.
- 5: A beach with a red and white umbrella and a chair.
- 6: A landscape with green hills.
- 7: A landscape with blue mountains.
- 8: A winding road.
- 8: A river flowing through a landscape.
- 9: A lake with a red boat and a wooden dock.

LABEL THE PICTURES.



# AT THE Campsite

GRAMMAR TIME

COMPLETE THE EXPRESSIONS WITH THE VERBS FROM THE BOX.

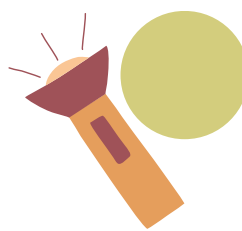
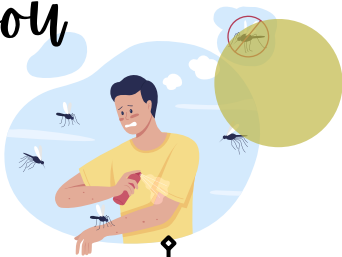
MAKE                      STAY                      GET                      TAKE  
EXPLORE                      PUT ON                      GO                      DRINK                      WALK (2X)

1. .... insect repellent
2. .... a fire
3. .... canoeing
4. .... a torch
5. .... on the path
6. .... an upset stomach
7. .... in the mountains
8. .... in the wood
9. .... explore
10. .... water from the river



WHAT SHOULD OR SHOULDN'T YOU DO? PUT A TICK OR A CROSS!

You



because

you can get an upset stomach

it can dangerous and dark

it can get dark early

mosquitos won't bite you

**SHOULD**  
POWINNO SIĘ

**SHOULDN'T**  
NIE POWINNO SIĘ

**LET'S PLAY!**  
SCAN THE CODE!

